

الحدائق الثقافية

Cultural Gardens

الحديقة الكورية



المجمع البيئي للتنمية المستدامة سیدی أمر
GDA Sidi Amor
Groupement Ecologique de Développement Durable

Spring 2016

The Korean Initiative at the GDA Sidi Amor

The prime collaboration with the Forest Research Institute (INRGREF) was to install a Korean arboretum under the patronage of The Korean Embassy.



**Integrated Sustainable
Development**



**Integrated Sustainable
Development**



**Integrated Sustainable
Development**

A look Back!

The Korean Scientific Exchange



**Integrated Sustainable
Development**



Integrated Sustainable
Development

A look Back!

The Korean Scientific Exchange



**Integrated Sustainable
Development**

A look Back!

The Korean Scientific Exchange



Integrated Sustainable
Development

A look Back!

The Korean Scientific Exchange



Integrated Sustainable
Development

A look Back!

The Korean Vegetable Garden– Youth Training



**Integrated Sustainable
Development**

A look Back!

The Korean Vegetable Garden– Youth Training



Integrated Sustainable
Development

A look Back!

The Korean Vegetable Garden – Youth Training



Integrated Sustainable
Development



**Integrated Sustainable
Development**

A look Back!

The Morning Calm Garden was our inspiration



**Integrated Sustainable
Development**

A look Back!

The Morning Calm Garden was our inspiration



**Integrated Sustainable
Development**



**Integrated Sustainable
Development**



**Integrated Sustainable
Development**



**Integrated Sustainable
Development**



**Integrated Sustainable
Development**



**Integrated Sustainable
Development**



**Integrated Sustainable
Development**



The 4,800-square-metre Korean Garden in the Grüneburg Park (Grüneburgpark .. The Rothschild) originated as part of South Korea's presentation as the guest of honour at the 2005 Frankfurt Book Fair, and was a gift to the city of Frankfurt am Main. This exotic treasure has been designed in the style of traditional Korean scholars' gardens, which since the 16th century have served as havens for artists and intellectuals



**Integrated Sustainable
Development**

We have four themed Gardens already installed, with ornamental, medicinal and aromatic plants to enhance the Biodiversity of the site.

- **A Rose Garden**
- **A medicinal Garden**
- **A Palm Tree Orchard**
- **A Korean Arboretum**

Integrated Development

It is because we have a dream to create on our site:

THE GARDENS of the FIVE CONTINENTS

**Integrated Sustainable
Development**

Next Step:

Korean Scholars' Garden

**At the heart of our Eco-village
At Sidi Amor**

**Integrated Sustainable
Development**

What we Propose ?

- The Rose Garden (1)
- The medicinal Garden (2)
- The Palm Tree Orchard (3)
- The Korean Arboretum (20)

Gardens of Jbel Sidi Amor -Ariana

We need to upgrade it to a:
Korean Scholars' Garden



General Layout



Blending with Nature around it

**Integrated Sustainable
Development**



A Pavilion for meditation

**Integrated Sustainable
Development**



Cascading Rose Beds

**Integrated Sustainable
Development**

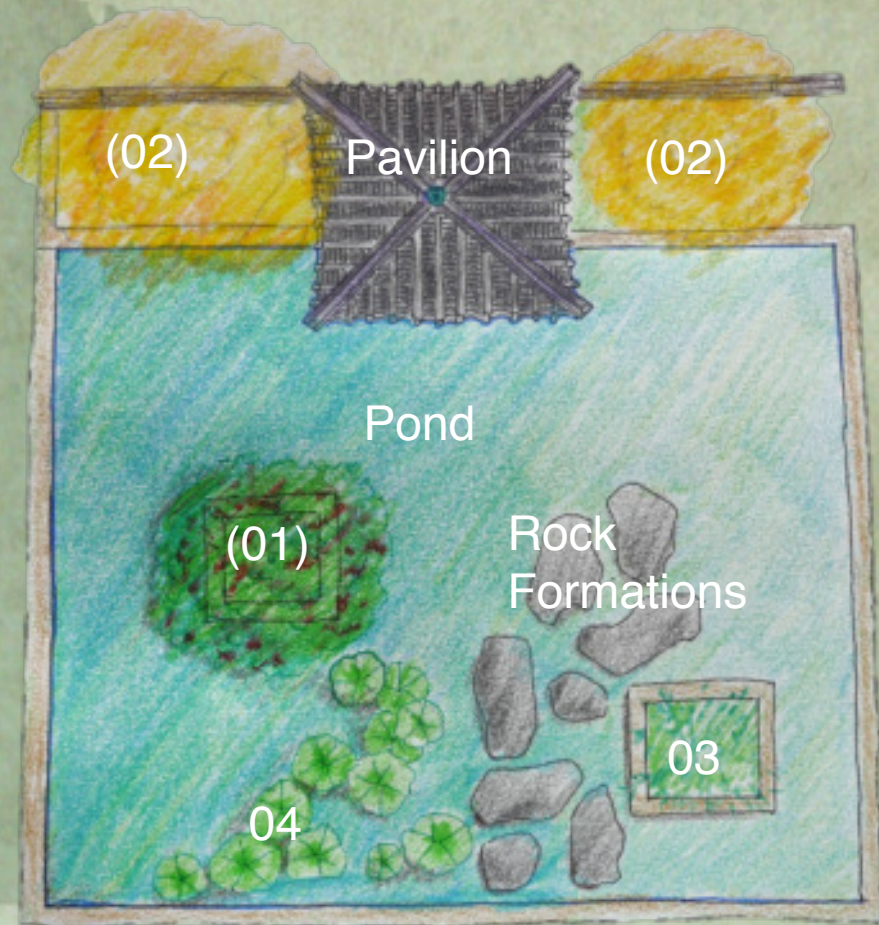
A close-up photograph of a pond featuring two lotus flowers. On the left is a white lotus flower with a bright yellow center. On the right is a pink lotus flower with a yellow-orange center. Both flowers are surrounded by large, round, green lily pads that have water droplets on their surfaces. The water in the pond is dark and still.

Planting Lotuses in the pond

**Integrated Sustainable
Development**

Proposed Trees:

| | |
|---------------|------|
| Crape Myrtles | (01) |
| Ginkgo Biloba | (02) |
| Green Bamboo | (03) |
| Lotus | (04) |



Korean Scholars' Garden

General Layout

شكراً

고맙습니다

Merci

Thank you